

**Central Texas Regional Mobility Authority**

**Balance Sheet**

As of

**March 31, 2012**

**March 31, 2011**

**Assets**

**Current Assets**

Cash in Regions Operating Account		84,277		87,347
Cash In TexSTAR	27,027		41,780	
Regions Payroll Account	4,171		4,751	
<b>Restricted cash/cash equivalents</b>				
Fidelity Government MMA	24,451,918		13,417,744	
Restricted Cash-TexStar	117,377,311		86,400,576	
Regions SIB account	0		12,997,083	
Overpayment accounts	28,009		16,844	
<b>Total Cash and Cash Equivalents</b>		141,888,436		112,966,125
Accounts Receivable	14,020		99,453	
Due From TTA	389,737		405,495	
Due From NTTA	45,174		30,378	
Due From HCTRA	64,586		92,911	
Due From TxDOT	1,455,788		105,656	
Due From Federal Government	463,465		677,228	
Interest Receivable	220,025		74,613	
<b>Total Receivables</b>		2,652,794		1,485,735
<b>Short Term Investments</b>				
Short Term Investments		161,707,343		11,053,366
<b>Other Current Assets</b>				
Prepaid Insurance		31,164		47,530
<b>Total Current Assets</b>		<b>306,364,013</b>		<b>125,552,756</b>

**Construction Work In Process**

**309,745,422** **143,381,155**

**Fixed Assets**

Computers(net)		30,735		35,660
Computer Software(net)		373,887		1,575,305
Furniture and Fixtures(net)		13,423		19,747
Equipment(net)		44,803		49,180
Autos and Trucks(net)		22,994		983
Buildings and Toll Facilities(net)		6,211,712		6,388,271
Highways and Bridges(net)		173,994,117		178,961,324
Communication Equipment(net)		999,148		1,177,949
Toll Equipment(net)		2,199,018		2,660,799
Signs(net)		4,989,142		5,122,410
Land Improvements(net)		1,129,001		908,033
Right of Way		24,683,553		23,683,553
Leasehold Improvements		60,934		61,019
<b>Total Fixed Assets</b>		<b>214,752,467</b>		<b>220,644,234</b>

**Long Term Investments**

GIC (Restricted )		14,653,423		66,788,267
Agencies-LT		18,145,913		0

**Other Assets**

Security Deposits		8,644		9,483
Intangible Assets		650		650
Total Bond Issuance Costs		15,616,942		10,494,708

**Total Assets**

**879,287,473**

**566,871,253**

## Liabilities

### Current Liabilities

Accounts Payable	441,926	691,096
Overpayments	28,833	17,377
Interest Payable	10,837,840	4,368,731
Deferred Compensation Payable	0	3,290
TCDRS Payable	33,023	27,753
Medical Reimbursement Payable	63	0
Due to other Entities	7,066	0
Other	0	1,458
Due to State of Texas	2,098	3,289
<b>Total Current Liabilities</b>	<b>11,350,849</b>	<b>5,112,994</b>

### Long Term Liabilities

Accrued Vac & Sick Leave Paybl	413,815	365,641
Retainage Payable	0	(284,102)
Senior Lien Revenue Bonds 2005	172,143,281	172,698,781
Senior Lien Revenue Bonds 2010	100,682,080	97,751,483
Senior Lien Revenue Bonds 2011	306,409,536	0
Sn Lien Rev Bnd Prem/Disc 2005	4,667,910	4,833,243
Sn Lien Rev Bnd Prem/Disc 2010	177,619	211,931
Tot Sr Lien Rev Bond Pay Pre/D	1,226,189	5,045,174
Subordinated Lien Bond 2010	45,000,000	45,000,000
Subordinated Lien Bond 2011	70,000,000	0
Sub Lien Bond 2011 Prem/Disc	(2,099,314)	
TIFIA note 2008	77,526,562	76,737,245
2010 Regions BAB's Payable	0	60,000,000
2011 Regions Draw Down Note	200,000	
2009 State Infrastructure loan	0	32,903,635
Total Long Term Liabilities	<b>771,502,149</b>	<b>490,217,857</b>
<b>Total Liabilities</b>	<b>782,852,997</b>	<b>495,330,851</b>

### Net Assets Section

Contributed Capital	18,334,846	18,334,846
Net Assets beginning	61,990,955	37,178,225
Current Year Operations	16,108,676	16,027,332
<b>Total Net Assets</b>	<b>78,099,631</b>	<b>53,205,556</b>

### Total Liabilities and Net Assets

**879,287,473**

**566,871,253**

**Central Texas Regional Mobility Authority**  
**Income Statement**  
**All Operating Departments**

Account Name	Budget Amount FY 2012	Actual Year to Date 3/31/2012	Percent of Budget	Actual Prior Year to Date 3/31/2011
<b>Revenue</b>				
<b>Operating Revenue</b>				
Toll Revenue-TxTag-183A	21,395,350	11,961,454	55.91%	11,753,630
Toll Revenue-HCTRA-183A	656,250	523,658	79.80%	471,270
Toll Revenue-NTTA-183A	411,600	338,079	82.14%	291,859
Video Tolls	3,004,800	2,703,205	89.96%	2,447,435
Fee revenue	1,252,000	1,101,749	88.00%	1,005,427
<b>Total Operating Revenue</b>	<b>26,720,000</b>	<b>16,628,145</b>	<b>62.23%</b>	<b>15,969,621</b>
<b>Other Revenue</b>				
Interest Income	180,000	148,019	82.23%	185,989
Grant Revenue	800,000	19,868,821	2484%	20,916,103
Reimbursed Expenditures	-	150,000		-
Misc Revenue	2,200	918,366	41744%	1,650
Gain/Loss on Redemption Bonds	-	-	0.00%	1,000
Gain/Loss on Sale of Asset	-	12,342		-
<b>Total Other Revenue</b>	<b>982,200</b>	<b>21,097,548</b>	<b>2148%</b>	<b>21,104,742</b>
<b>Total Revenue</b>	<b>\$ 27,702,200</b>	<b>\$ 37,725,693</b>	<b>136.18%</b>	<b>\$ 37,074,363</b>
<b>Expenses</b>				
<b>Salaries and Wages</b>				
Salary Expense-Regular	2,010,301	1,390,676	69.18%	1,209,753
Part Time Salry Expense	12,000	7,927	66.06%	6,146
Overtime Salary Expense	4,000	-	0.00%	-
Contractual Employees Expense	105,000	7,623	7.26%	29,550
TCDRS	304,235	195,118	64.13%	173,387
FICA	97,856	56,508	57.75%	50,375
FICA MED	30,715	19,957	64.97%	17,089
Health Insurance Expense	204,527	140,927	68.90%	109,858
Life Insurance Expense	5,374	3,056	56.87%	4,125
Auto Allowance Expense	9,000	4,462	49.58%	7,098
Other Benefits	171,305	136,647	79.77%	40,263
Unemployment Taxes	13,059	1,711	13.10%	2,874
Salary Reserve	91,871	-	0.00%	-
<b>Total Salaries and Wages</b>	<b>3,059,243</b>	<b>1,964,611</b>	<b>64.22%</b>	<b>1,650,517</b>

**Central Texas Regional Mobility Authority**  
**Income Statement**  
**All Operating Departments**

Account Name	Budget Amount FY 2012	Actual Year to Date 3/31/2012	Percent of Budget	Actual Prior Year to Date 3/31/2011
<b>Contractual Services</b>				
<u>Professional Services</u>				
Accounting	9,500	24,029	252.94%	5,703
Auditing	55,000	44,771	81.40%	42,650
General Engineering Consultant	1,250,000	661,104	52.89%	670,018
General System Consultant	175,000	37,484	21.42%	5,894
Image Processing	600,000	583,662	97.28%	497,614
Facility maintenance	20,000	10,740	53.70%	66,536
HERO	820,000	510,641	62.27%	581,267
Human Resources	80,000	67,281	84.10%	14,869
Legal	250,000	76,991	30.80%	77,778
Photography	15,000	12,500	83.33%	13,545
<b>Total Professional Services</b>	<b>3,274,500</b>	<b>2,029,203</b>	<b>61.97%</b>	<b>1,975,875</b>
<u>Other Contractual Services</u>				
IT Services	45,000	31,784	70.63%	28,299
Graphic Design Services	10,000	400	4.00%	1,858
Website Maintenance	25,000	10,875	43.50%	44,671
Research Services	25,000	3,100	12.40%	26,089
Copy Machine	9,000	4,457	49.53%	5,740
Software Licenses	26,000	805	3.09%	7,387
ETC Maintenance Contract	840,000	552,257	65.74%	491,314
ETC Development	125,000	15,356	12.28%	19,903
ETC Testing	30,000	1,620	5.40%	-
Communications and Marketing	170,000	77,777	45.75%	114,120
Advertising Expense	40,000	31,906	79.77%	39,364
Direct Mail	5,000	-	0.00%	-
Video Production	5,000	1,946	38.91%	-
Radio	15,000	-	0.00%	-
Other Public Relations	2,500	-	0.00%	-
Law Enforcement	250,000	174,600	69.84%	134,792
Special assignments	5,000	-	0.00%	-
Traffic Management	84,000	55,890	66.54%	42,306
Emergency Maintenance	10,000	-	0.00%	-
Security Contracts	600	-	0.00%	-
Roadway Maintenance Contract	300,000	74,559	24.85%	63,457

**Central Texas Regional Mobility Authority**  
**Income Statement**  
**All Operating Departments**

Account Name	Budget Amount FY 2012	Actual Year to Date 3/31/2012	Percent of Budget	Actual Prior Year to Date 3/31/2011
Landscape Maintenance	280,000	102,253	36.52%	81,544
Signal & Illumination Maint	175,000	60,950	34.83%	98,870
Mowing and litter control	40,000	52,095	130.24%	49,051
Hazardous Material Cleanup	10,000	-	0.00%	-
Striping	75,000	19,600	26.13%	-
Graffiti removal	10,000	-	0.00%	1,900
Cell Phones	10,700	6,283	58.72%	6,540
Local Telephone Service	16,000	9,732	60.83%	7,169
Long Distance	600	-	0.00%	217
Internet	6,000	435	7.25%	2,386
Fiber Optic System	63,000	31,999	50.79%	34,492
Other Communication Expenses	1,500	273	18.22%	1,325
Subscriptions	1,850	120	6.48%	52
Memberships	29,100	27,180	93.40%	23,000
Continuing Education	2,000	4,432	221.61%	3,100
Professional Development	5,000	3,470	69.40%	-
Seminars and Conferences	32,500	10,479	32.24%	12,565
Staff-Travel	76,500	30,482	39.85%	26,523
Other Contractual Svcs	125,200	177	0.14%	153
Roadway maintenance contract	-	-	0.00%	13,875
TxTag Collection Fees	1,347,791	909,125	67.45%	1,062,695
Contractual Contingencies	140,500	34,115	24.28%	11,748
<b>Total Other Contractual Services</b>	<b>4,470,341</b>	<b>2,340,532</b>	<b>52.36%</b>	<b>2,456,504</b>
<b>Total Contractual Services</b>	<b>7,744,841</b>	<b>4,369,736</b>	<b>56.42%</b>	<b>4,432,380</b>
<b>Materials and Supplies</b>				
Books & Publications	16,000	6,817	42.61%	9,529
Office Supplies	10,000	4,023	40.23%	4,576
Computer Supplies	13,000	8,107	62.36%	10,167
Copy Supplies	2,200	585	26.59%	649
Annual Report printing	10,000	7,673	76.73%	5,354
Other Reports-Printing	20,000	1,298	6.49%	640
Direct Mail Printing	5,000	-	0.00%	-
Office Supplies-Printed	3,000	1,328	44.27%	1,693
Ice Control Materials	25,000	-	0.00%	-
Maintenance Supplies-Roadway	100,000	9,175	9.17%	-

**Central Texas Regional Mobility Authority**  
**Income Statement**  
**All Operating Departments**

Account Name	Budget Amount FY 2012	Actual Year to Date 3/31/2012	Percent of Budget	Actual Prior Year to Date 3/31/2011
Promotional Items	10,000	-	0.00%	3,235
Displays	5,000	-	0.00%	-
ETC spare parts expense	30,000	3,178	10.59%	-
Tools & Equipment Expense	1,000	89	8.86%	14
Misc Materials & Supplies	2,000	683	34.15%	82
<b>Total Materials and Supplies</b>	<b>252,200</b>	<b>42,956</b>	<b>17.03%</b>	<b>35,939</b>
<b>Operating Expenses</b>				
Gasoline Expense	5,000	3,500	70.00%	2,848
Mileage Reimbursement	7,500	3,421	45.61%	2,535
Toll Tag Expense	4,100	2,336	56.97%	2,167
Parking	38,595	32,676	84.66%	24,064
Meeting Facilities	450	-	0.00%	100
Community Meeting/ Events	5,000	-	0.00%	500
Meeting Expense	6,750	3,388	50.19%	3,202
Public Notices	2,400	-	0.00%	-
Postage Expense	5,950	471	7.91%	536
Overnight Delivery Services	1,600	535	33.45%	89
Local Delivery Services	1,950	6	0.29%	706
Insurance Expense	90,000	53,087	58.99%	34,062
Repair & Maintenance-General	500	263	52.50%	158
Repair & Maintenance-Vehicles	100	460	459.92%	854
Repair & Maintenance Toll Equip	5,000	2,047	40.94%	-
Rent Expense	190,000	155,313	81.74%	140,349
Water	7,500	4,984	66.45%	3,469
Electricity	83,500	47,126	56.44%	46,568
Other Licenses	250	510	204.00%	235
Community Initiative Grants	65,000	47,500	73.08%	50,750
<b>Non Cash Operating Expenses</b>				
Amortization Expense	1,230,000	921,644	74.93%	922,212
Dep Exp- Furniture & Fixtures	16,500	6,422	38.92%	12,106
Dep Expense - Equipment	14,500	11,783	81.26%	10,783
Dep Expense - Autos & Trucks	5,000	4,599	91.98%	2,950
Dep Expense-Buildng & Toll Fac	177,000	132,419	74.81%	132,419
Dep Expense-Highways & Bridges	5,000,000	3,725,405	74.51%	3,725,405
Dep Expense-Communic Equip	195,000	143,128	73.40%	145,964

**Central Texas Regional Mobility Authority**  
**Income Statement**  
**All Operating Departments**

Account Name	Budget Amount FY 2012	Actual Year to Date 3/31/2012	Percent of Budget	Actual Prior Year to Date 3/31/2011
Dep Expense-Toll Equipment	465,000	346,336	74.48%	346,336
Dep Expense - Signs	135,000	99,951	74.04%	99,951
Dep Expense-Land Improvemts	52,000	49,353	94.91%	38,688
Depreciation Expense-Computers	6,500	7,309	112.44%	7,814
<b>Total Operating Expenses</b>	<b>7,817,645</b>	<b>5,805,967</b>	<b>74.27%</b>	<b>5,757,821</b>
<b>Financing Expenses</b>				
Arbitrage Rebate Calculation	2,500	5,455	218.20%	5,750
Loan Fee Expense	12,500	12,000	96.00%	11,500
Rating Agency Expense	33,000	5,300	16.06%	31,300
Trustee Fees	2,000	-	0.00%	-
Bank Fee Expense	7,500	15,890	211.87%	5,004
Continuing Disclosure	4,000	-	0.00%	-
Interest Expense	12,038,096	9,017,391	74.91%	8,893,715
Contingency	15,000	-	0.00%	-
<u>Non Cash Financing Expenses</u>				
Bond issuance expense	385,707	377,710	97.93%	223,106
<b>Total Financing Expenses</b>	<b>12,500,303</b>	<b>9,433,747</b>	<b>75.47%</b>	<b>9,170,375</b>
<b>Other Gains or Losses</b>				
Total Other Gains or Losses	-	-	0.00%	-
<b>Total Expenses</b>	<b>\$ 31,374,232</b>	<b>\$ 21,617,017</b>	<b>68.90%</b>	<b>\$ 21,047,032</b>
Net Income	\$ (3,672,032)	\$ 16,108,676		\$ 16,027,332

**INVESTMENTS by FUND**

		Balance March 31, 2012		
<b>Renewal &amp; Replacement Fund</b>				
<b>TexSTAR</b>	660,143.78		<b>TexSTAR</b>	94,488,754.77
<b>Fidelity</b>	0.66		<b>CD's</b>	-
<b>Agencies</b>		660,144.44	<b>Fidelity</b>	24,451,917.74
<b>TxDOT Grant Fund</b>			<b>Agencies</b>	198,560,480.50
<b>TexSTAR</b>	5,417,001.17		<b>Bayerische GIC</b>	14,626,944.00
<b>Fidelity</b>	3,031,875.00			
<b>Agencies</b>	1,000,000.00	9,448,876.17		
<b>Subordinate Lien DS Fund 05</b>				
<b>Fidelity</b>	937,234.71	937,234.71		
<b>Debt Service Reserve Fund 05</b>				
<b>TexSTAR</b>	30,740,101.34			
<b>Fidelity</b>	21,544.13			
<b>CD's</b>	0.00			
<b>Agencies</b>	12,258,474.27	43,020,119.74		
<b>Debt Service Fund 05</b>				
<b>Fidelity</b>	2,521,246.23	2,521,246.23		
<b>2010-1 Debt Service Fund</b>				
<b>Fidelity</b>	734,073.14	734,073.14		
<b>2011 Debt Service Acct</b>				
<b>Fidelity</b>	2,631.04	2,631.04		
<b>2010 Senior Lien DSF</b>				
<b>TexSTAR</b>	0.15			
<b>Fidelity</b>	0.00	0.15		
<b>2011 Sub Debt DSRF</b>				
<b>Fidelity</b>	3,499,109.53			
<b>Agencies</b>	3,500,888.12	6,999,997.65		
<b>Operating Fund</b>				
<b>TexSTAR</b>	27,027.16			
<b>TexSTAR-Trustee</b>	147,325.79			
<b>Fidelity</b>	0.00			
<b>Region's SIB Loan MMA</b>	0.00	174,352.95		
<b>Revenue Fund</b>				
<b>TexSTAR</b>	1.00			
<b>Fidelity</b>	1,061,416.48	1,061,417.48		
<b>General Fund</b>				
<b>TexSTAR</b>	3,319,083.66			
<b>Fidelity</b>	4,183,880.86	7,502,964.52		
<b>2010 Senior Lien Capitalized Interest</b>				
<b>Fidelity</b>	531.34			
<b>TexSTAR</b>	3,424,671.03			
<b>Bayerische GIC</b>	0.00	3,425,202.37		
<b>2010-1 Sub Lien Capitalized Interest</b>				
<b>Fidelity</b>	0.00			
<b>TexSTAR</b>	0.09	0.09		
<b>2010-2 Sub Lien Capitalized Interest</b>				
<b>TexSTAR</b>	250,532.04			
<b>Fidelity</b>	0.00	250,532.04		
<b>2011 Sr Capitalized Interest Fund</b>				
<b>Fidelity</b>	34,416.03			
<b>Agencies</b>	35,506,241.92	35,540,657.95		
<b>2011 Sub Capitalized Interest Fund</b>				
<b>Fidelity</b>	817.38			
<b>Agencies</b>	9,359,307.94	9,360,125.32		
<b>2010-1 Sub BABs subsidy</b>				
<b>Fidelity</b>	0.39	0.39		
<b>2010-2 Sub BABs subsidy</b>				
<b>Fidelity</b>	2.25	2.25		
<b>2010 Senior Lien Debt Service Reserve Fund</b>				
<b>TexSTAR</b>	5,552,888.85			
<b>Fidelity</b>	21,937.50			
<b>Agencies</b>	3,940,628.25	9,515,454.60		
<b>2010-2Sub Lien Debt Service Reserve Fund</b>				
<b>TexSTAR</b>	778,462.46			
<b>Fidelity</b>	0.00			
<b>Agencies</b>	390,000.00	1,168,462.46		
<b>2010-1Sub Lien Debt Service Reserve Fund</b>				
<b>TexSTAR</b>	1,963,382.18			
<b>Fidelity</b>	0.00			
<b>Agencies</b>	2,010,640.00	3,974,022.18		
<b>2010-1 Sub Lien Projects Fund</b>				
<b>TexSTAR</b>	1,172,359.12			
<b>Fidelity</b>	0.00	1,172,359.12		
<b>2010 Senior Lien Construction Fund</b>				
<b>TexSTAR</b>	1.19			
<b>Fidelity</b>	485.30			
<b>Bayerische GIC</b>	14,626,944.00	14,627,430.49		
<b>2011 Sub Debt Project fund</b>				
<b>Agencies</b>	43,763,610.00			
<b>Fidelity</b>	0.00	43,763,610.00		
<b>2011 Senior Lien Project Fund</b>				
<b>TexSTAR</b>	41,035,773.76			
<b>Fidelity</b>	8,400,715.77			
<b>Agencies</b>	86,830,690.00	136,267,179.53		
		<u>\$ 332,128,097.01</u>		



**CTRMA INVESTMENT REPORT**

Month Ending 3/31/12							Rate Mar 12
Balance 2/29/2012	Additions	Discount Amortization	Accrued Interest	Withdrawals	Balance 3/31/2012		
<b>Amount in Trustee TexStar</b>							
2011 Senior Lien Construction Fund	10.46	132,725,443.60		6,589.39	91,696,269.69	41,035,773.76	0.106%
2010 Senior Lien Construction Fund	1.19					1.19	0.106%
2010-1 Sub Lien Projects	1,004,544.78	167,708.02		106.32		1,172,359.12	0.106%
General Fund	4,172,417.54			335.81	853,669.69	3,319,083.66	0.106%
Trustee Operating Fund	147,304.24	650,000.48		21.07	650,000.00	147,325.79	0.106%
Renewal and Replacement	660,079.44			64.34		660,143.78	0.106%
TxDOT Grant Fund	4,414,362.21	1,002,158.49		480.47		5,417,001.17	0.106%
Revenue Fund	1.00					1.00	0.106%
Senior Lien Debt Service Reserve Fund	30,737,105.46			2,995.88		30,740,101.34	0.106%
2010 Senior Lien DSF	0.15					0.15	0.106%
2010 Senior Lien Debt Service Reserve Fund	5,523,577.81	28,771.22		539.82		5,552,888.85	0.106%
2010-2Sub Lien Debt Service Reserve Fund	711,131.58	67,258.20		72.68		778,462.46	0.106%
2010-1Sub Lien Debt Service Reserve Fund	1,910,954.54	52,238.77		188.87		1,963,382.18	0.106%
2010 Senior Lien Capitalized Interest	842.56	3,423,643.99		184.48		3,424,671.03	0.106%
2010-1 Sub Lien Capitalized Interest	0.09					0.09	0.106%
2010-2 Sub Lien Capitalized Interest	126.81	250,392.67		12.56		250,532.04	0.106%
	<b>49,282,459.86</b>	<b>138,367,615.44</b>	<b>0.00</b>	<b>11,591.69</b>	<b>93,199,939.38</b>	<b>94,461,727.61</b>	
<b>Amount in TexStar Operating Fund</b>	<b>5,823.95</b>	<b>650,000.00</b>		<b>3.21</b>	<b>628,800.00</b>	<b>27,027.16</b>	<b>0.106%</b>

**CTRMA INVESTMENT REPORT**

	Month Ending 3/31/12					Rate Mar 12	
	Balance 2/29/2012	Additions	Discount Amortization	Accrued Interest	Withdrawals		Balance 3/31/2012
<b>Fidelity Money Market Fund</b>							
Operating Fund	0.30	650,000.00		0.18	650,000.48	0.00	0.001%
2010-1 Sub Lien Project Acct	17,707.88	150,000.00		0.14	167,708.02	0.00	0.001%
2010 Senior Lien Project Acct	425.54	1,922,353.22		0.01	1,922,293.47	485.30	0.001%
2011 Senior Lien Project Acct	362.20	235,793,389.28		4.04	227,393,039.75	8,400,715.77	0.001%
2005 Debt Service Fund	1,680,840.27	840,395.83		10.13		2,521,246.23	0.001%
2011 Senior Lien Debt Service Acct	2,631.02			0.02		2,631.04	0.001%
2010-1 Debt Service Fund	0.00	734,073.14				734,073.14	0.001%
Subordinate Lien TIFIA DS Fund	1,019,836.01	312,403.83		5.51	395,010.64	937,234.71	0.001%
2010-2 BABs Supplemental Security	2.25					2.25	0.001%
2010-2 Cap I Fund	250,390.68			1.99	250,392.67	0.00	0.001%
2010 CAP Interest Senior lien	531.34					531.34	0.001%
2011 Sr Cap I Fund	34,415.76			0.27		34,416.03	0.001%
2011 Sub Debt CAP I	817.37			0.01		817.38	0.001%
2010-1 Sub lien BABs supplemental Security	0.39					0.39	0.001%
2011 Subordinate Lien Project	0.10	73,063,643.27			73,063,643.37	0.00	0.001%
TxDOT Grant Fund	2,003,705.07	3,031,875.00		15.92	2,003,720.99	3,031,875.00	0.001%
Renewal and Replacement	0.66					0.66	0.001%
Revenue Fund	917,789.92	2,369,331.98		7.83	2,225,713.25	1,061,416.48	0.001%
General Fund	311,454.33	5,097,725.55		0.74	1,225,299.76	4,183,880.86	0.001%
2010 Senior Debt Service Reserve Fund	28,766.50			21,942.22	28,771.22	21,937.50	0.001%
2010-1 Debt Service Reserve Fund	33,696.35	18,539.95		2.47	52,238.77	0.00	0.001%
2010-2 Debt Service Reserve Fund	60,352.13	6,905.62		0.45	67,258.20	0.00	0.001%
2011 Sub Debt Debt Service Reserve Fund	3,499,081.73			27.80		3,499,109.53	0.001%
2005 Senior Lien Debt Service Reserve Fund	0.00			21,544.13		21,544.13	0.001%
<b>24,451,917.74</b>	<b>9,862,807.80</b>	<b>323,990,636.67</b>	<b>0.00</b>	<b>43,563.86</b>	<b>309,445,090.59</b>	<b>24,451,917.74</b>	

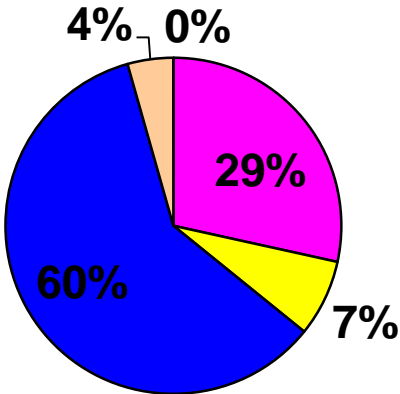
**CTRMA INVESTMENT REPORT**

Month Ending 3/31/12							Rate Mar 12
Balance 2/29/2012	Additions	Discount Amortization	Accrued Interest	Withdrawals	Balance 3/31/2012		
<b>Amount in Bayerische Landesbank GIC</b>							
Senior Lien Cap-I 2010	3,419,964.75			3,679.23	3,423,643.98	0.00	0.880%
Senior Lien Project Fund 2010	16,536,629.23			12,667.99	1,922,353.22	14,626,944.00	0.850%
Senior & Sub Lien Project Fund 2011	183,615,509.82			66,550.57	183,682,060.39	0.00	0.295%
<b>203,572,103.80</b>	<b>0.00</b>	<b>0.00</b>	<b>82,897.79</b>	<b>189,028,057.59</b>	<b>14,626,944.00</b>		
<b>Amount in Fed Agencies and Treasuries</b>							
Amortized Principal	70,024,659.68	131,594,300.00	(58,479.17)		3,000,000.00	198,560,480.51	
Accrued Interest				84,934.70			
	70,024,659.68	131,594,300.00	(58,479.17)		3,000,000.00	198,560,480.51	
<b>Certificates of Deposit</b>							
Total in Pools	3,000,000.00				3,000,000.00	0.00	
Total in Money Market	49,288,283.81	139,017,615.44		11,594.90	93,828,739.38	94,488,754.77	
Total in Fed Agencies	9,862,807.80	323,990,636.67		43,563.86	309,445,090.59	24,451,917.74	
Bayerische Landesbank GIC	70,024,659.68	131,594,300.00	(58,479.17)		3,000,000.00	198,560,480.51	
	203,572,103.80	0.00		82,897.79	189,028,057.59	14,626,944.00	
<b>Total Invested</b>	<b>335,747,855.09</b>	<b>594,602,552.11</b>	<b>(58,479.17)</b>	<b>138,056.55</b>	<b>598,301,887.56</b>	<b>332,128,097.02</b>	

All Investments in the portfolio are in compliance with the CTRMA's Investment policy.

William Chapman, CFO

# Allocation of Funds



- Certificates of Deposit
- Total in Pools
- Total in Money Market
- Total in Fed Agencies
- Bayerische Landesbank GIC

Amount of investments As of March, 2012

Agency	CUSIP #	COST	Book Value	Market Value	Yield to Maturity	Purchased	Matures	FUND
San Antonio Water Utilities	79642BLM3	200,000.00	200,000.00	200,040.00	1.1090%	11/23/2010	5/15/2012	2010-2 DSRF
San Antonio Water Utilities	79642BLN1	190,000.00	190,000.00	190,959.50	1.4570%	11/23/2010	5/15/2013	2010-2 DSRF
Federal Home loan Bank	3137EABY4	<b>MATURED</b>	<b>MATURED</b>	<b>MATURED</b>	0.4005%	12/23/2010	3/23/2012	TxDOT Grant Fund
Freddie Mac	3134G2U42	1,000,000.00	1,000,000.00	1,000,440.00	0.3750%	3/15/2012	10/15/2013	TxDOT Grant Fund
Fannie Mae	31398A6F4	2,319,702.34	2,317,351.16	2,319,028.10	0.2391%	6/29/2011	12/28/2012	2011 Sub Debt CAP I
Federal Home loan Bank	3137EABM0	2,473,720.78	2,415,700.49	2,420,525.82	0.3930%	6/29/2011	6/28/2013	2011 Sub Debt CAP I
Federal Home loan Bank	3134A4UL6	2,326,924.30	2,340,077.69	2,328,247.02	0.6300%	6/29/2011	11/15/2013	2011 Sub Debt CAP I
Treasury	912828GW4	2,367,714.38	2,286,178.60	2,285,294.76	0.0730%	6/29/2011	6/30/2012	2011 Sub Debt CAP I
Federal Home loan Bank	3134A4UL6	8,794,454.76	8,852,034.23	8,818,161.66	0.7190%	6/29/2011	11/15/2013	2011 Sr Debt CAP I
Federal Home loan Bank	3137EABM0	9,351,457.81	9,137,911.13	9,166,475.96	0.4830%	6/29/2011	6/28/2013	2011 Sr Debt CAP I
Treasury	912828NS5	8,776,228.75	8,747,557.19	8,748,922.50	0.1880%	6/29/2011	6/30/2012	2011 Sr Debt CAP I
Fannie Mae	31398A6F4	8,771,478.75	8,768,739.37	8,781,252.84	0.3331%	6/29/2011	12/28/2012	2011 Sr Debt CAP I
Fannie Mae	3135G0GU1	7,002,030.00	7,001,776.25	7,003,920.00	0.4704%	1/3/2012	12/27/2013	2011 Sr DSRF
Fannie Mae	3135G0GU1	3,501,015.00	3,500,888.12	3,499,109.53	0.4704%	1/3/2012	12/27/2013	2011 Sub DSRF
Davis Cnty Utah Sch Dist	239019UK6	1,397,056.00	1,386,799.00	1,387,035.70	0.2300%	2/9/2012	6/1/2013	2011 SR DSRF
Fannie Mae	31398A3L4	3,883,198.70	3,869,899.02	3,869,563.90	0.2605%	2/7/2012	9/17/2013	2005 Sr DSRF
Fannie Mae	31398A3L4	3,954,171.00	3,940,628.25	3,940,287.00	0.2605%	2/7/2012	9/17/2013	2010 Sr DSRF
Fannie Mae	3135G0GH0	2,011,400.00	2,010,640.00	2,007,320.00	0.2104%	2/6/2012	12/5/2014	2010-1 DSRF
Federal Home Loan Bank	3133XR88	7,370,650.00	7,370,650.00	7,366,940.00	0.2990%	3/30/2012	9/6/2013	2011 Sr Project
Federal Home Loan Bank	313376M85	24,999,500.00	24,999,500.00	24,999,500.00	0.1830%	3/30/2012	12/28/2012	2011 Sr Project
Federal Home Loan Bank	313378U41	12,009,480.00	12,009,480.00	12,001,200.00	0.2970%	3/30/2012	9/30/2013	2011 Sr Project
Freddie Mac	3134G3BF6	12,054,960.00	12,054,960.00	12,045,840.00	0.3592%	3/30/2012	12/23/2013	2011 Sr Project
Federal Home Loan Bank	3133765P6	20,007,600.00	20,007,600.00	20,003,800.00	0.1535%	3/30/2012	10/26/2012	2011 Sr Project
Federal Home Loan Bank	313376KS3	25,047,750.00	25,047,750.00	25,020,000.00	0.2440%	3/30/2012	6/21/2013	2011 Sub Project
Fannie Mae	31359MRG0	18,715,860.00	18,715,860.00	18,708,840.00	0.1950%	3/30/2012	3/15/2013	2011 Sub Project
Federal Home Loan Bank	3133XWKV0	10,388,500.00	10,388,500.00	10,382,500.00	0.3791%	3/30/2012	3/14/2014	2011 Sr Project
		<u>198,914,852.57</u>	<u>198,560,480.50</u>	<u>198,495,204.29</u>				

Agency	CUSIP #	COST	Cumulative Amortization	3/31/2012		Interest Income March 2012		
				Book Value	Maturity Value	Accrued Interest	Amortization	Interest Earned
San Antonio Water Utilities	79642BLM3	200,000.00	0.00	200,000.00	200,000.00	184.83		184.83
San Antonio Water Utilities	79642BLN1	190,000.00	0.00	190,000.00	190,000.00	230.69		230.69
Federal Home loan Bank	3137EABY4	<b>MATURED</b>	<b>MATURED</b>	<b>MATURED</b>	3,000,000.00	5,312.50	(4,296.80)	1,015.70
Freddie Mac	3134G2U42	1,000,000.00	-	1,000,000.00	1,000,000.00	(1,562.50)		(1,562.50)
Fannie Mae	31398A6F4	2,319,702.34	2,351.18	2,317,351.16	2,315,000.00	723.44	(261.24)	462.20
Federal Home loan Bank	3137EABM0	2,473,720.78	58,020.29	2,415,700.49	2,319,000.00		(6,446.70)	(6,446.70)
Federal Home loan Bank	3134A4UL6	2,326,924.30	13,153.39	2,340,077.69	2,362,000.00		1,461.49	1,461.49
Treasury	912828GW4	2,367,714.38	81,535.78	2,286,178.60	2,259,000.00	9,177.19	(9,059.53)	117.66
Federal Home loan Bank	3134A4UL6	8,794,454.76	57,579.47	8,852,034.23	8,946,000.00		6,397.72	6,397.72
Federal Home loan Bank	3137EABM0	9,351,457.81	213,546.68	9,137,911.13	8,782,000.00	27,443.75	(23,727.41)	3,716.34
Treasury	912828NS5	8,776,228.75	28,671.56	8,747,557.19	8,738,000.00	4,551.04	(3,185.73)	1,365.31
Fannie Mae	31398A6F4	8,771,478.75	2,739.38	8,768,739.37	8,766,000.00	2,739.38	(304.38)	2,435.00

Fannie Mae	3135G0GU1	7,002,030.00	253.75	7,001,776.25	7,000,000.00		2,916.67	(84.58)	2,832.09
Fannie Mae	3135G0GU2	3,501,015.00	126.88	3,500,888.12	3,500,000.00		1,458.33	(42.29)	1,416.04
Davis Cnty Utah Sch Dist	239019UK6	1,397,056.00	10,257.00	1,386,799.00	1,315,000.00		8,218.75	(5,128.50)	3,090.25
Fannie Mae	31398A3L4	3,883,198.70	13,299.68	3,869,899.02	3,830,000.00		10,771.88	(6,649.84)	4,122.04
Fannie Mae	31398A3L4	3,954,171.00	13,542.75	3,940,628.25	3,900,000.00		10,968.75	(6,771.38)	4,197.37
Fannie Mae	3135G0GH0	2,011,400.00	760.00	2,010,640.00	2,000,000.00		1,800.00	(380.00)	1,420.00
Federal Home Loan Bank	3133XR88	7,370,650.00	-	7,370,650.00	7,000,000.00				0.00
Federal Home Loan Bank	313376M85	24,999,500.00	-	24,999,500.00	25,000,000.00				0.00
Federal Home Loan Bank	313378U41	12,009,480.00	-	12,009,480.00	12,000,000.00				0.00
Freddie Mac	3134G3BF6	12,054,960.00	-	12,054,960.00	12,000,000.00				0.00
Federal Home Loan Bank	3133765P6	20,007,600.00	-	20,007,600.00	20,000,000.00				0.00
Federal Home Loan Bank	313376KS3	25,047,750.00	-	25,047,750.00	25,000,000.00				0.00
Fannie Mae	31359MRG0	18,715,860.00	-	18,715,860.00	18,000,000.00				0.00
Federal Home Loan Bank	3133XWKV0	10,388,500.00		10,388,500.00	10,000,000.00				0.00
		<b>198,914,852.57</b>	<b>495,837.79</b>	<b>198,560,480.50</b>	<b>199,422,000.00</b>		<b>84,934.70</b>	<b>(58,479.17)</b>	<b>26,455.53</b>



## Monthly Newsletter - March 2012

### Performance

#### As of March 31, 2012

Current Invested Balance	\$5,668,145,582.64
Weighted Average Maturity (1)	50 Days
Weighted Average Maturity (2)	72 Days
Net Asset Value	1.000123
Total Number of Participants	751
Management Fee on Invested Balance	0.05%*
Interest Distributed	\$817,984.80
Management Fee Collected	\$247,715.10
% of Portfolio Invested Beyond 1 Year	2.65%
Standard & Poor's Current Rating	AAAm

Rates reflect historical information and are not an indication of future performance.

#### March Averages

Average Invested Balance	\$5,846,632,868.88
Average Monthly Yield, on a simple basis	0.1148%
Average Weighted Average Maturity (1)*	48 Days
Average Weighted Average Maturity (2)*	71 Days

#### Definition of Weighted Average Maturity (1) & (2)

- (1) This weighted average maturity calculation uses the SEC Rule 2a-7 definition for stated maturity for any floating rate instrument held in the portfolio to determine the weighted average maturity for the pool. This Rule specifies that a variable rate instrument to be paid in 397 calendar days or less shall be deemed to have a maturity equal to the period remaining until the next readjustment of the interest rate.
- (2) This weighted average maturity calculation uses the final maturity of any floating rate instruments held in the portfolio to calculate the weighted average maturity for the pool.

\* The maximum management fee authorized for the TexSTAR Cash Reserve Fund is 12 basis points. This fee may be waived in full or in part in the discretion of the TexSTAR co-administrators at any time as provided for in the TexSTAR Information Statement.

### Forms to Update your Account Information

As a reminder, please be aware that the most current forms to update your TexSTAR account are available on the TexSTAR website under "Participant Services" and "Account Forms". Using these documents ensures you have the most current version and limits any possible revisions or delays. The forms can be filled out online and printed to obtain the needed signatures. Please note the form to change Authorized Representatives **requires an Entity Seal for verification** and original signatures for processing. TexSTAR Participant Services is happy to provide whatever assistance you may need in updating your account information and can be contacted either by phone at 1-800-839-7827 or by email at [texstar@firstsw.com](mailto:texstar@firstsw.com).

### Economic Commentary

The steady recovery in the U.S. and determination of European officials to avoid market disruption, alongside the commitment of central banks across the developed world to remain accommodative, caused credit spreads to compress significantly. The liquidity provided by the European Central Bank provided the European financial system with time to address its solvency issues, including allowing Greece to restructure its debt. However, market participants continue to be mindful of additional risks in the form of financial concerns elsewhere in Europe, particularly in Portugal and Spain, as well as potential growth concerns in China and rising oil and gas prices. Even with the remarkable market performance of the first quarter, investors remained relatively cautious as evidenced by continued strong inflows into bond funds.

Markets focused on positive U.S. economic developments during the quarter as data reflected growth stronger than expectations at the beginning of the year. Specifically, the labor market continued to improve and national manufacturing and consumer confidence surveys were generally indicative of expansion, but activity measures were more subdued, with new risks coming from rising oil and gas prices. Ultimately, concerns remain that sub-trend growth will not result in a sustainable recovery. Inflation continued to be above the Federal Reserve's long term target of 2%, but declined from almost 3.0% in the third quarter of 2011. The data coincides with the Federal Reserve's statements that inflation remains "subdued," although higher gasoline prices are likely to result in a temporary increase in headline inflation data over the near term.

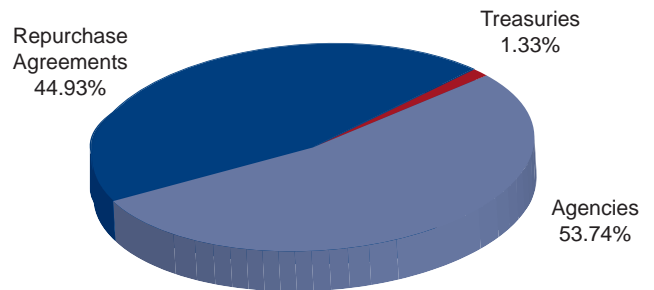
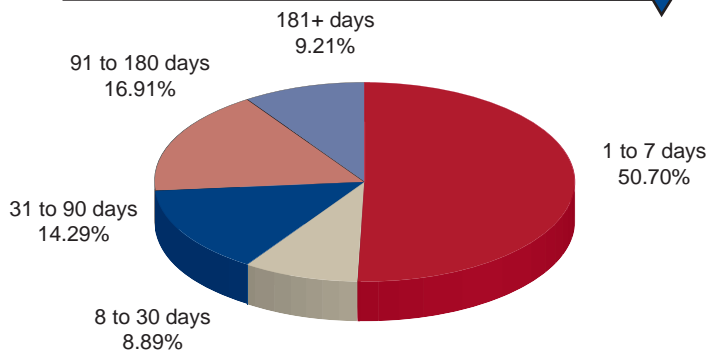
Chairman Bernanke has noted that the FOMC is likely to maintain its accommodative stance and, as a result, may not need much of a catalyst to ease monetary policy further. A significant increase in growth to above trend would likely be necessary before the FOMC would change its easy posture on monetary policy. It is also likely the committee is keenly aware of upcoming fiscal headwinds to growth starting in 2013 in the form of expiring payroll tax cuts, unemployment benefits, and Bush-era tax cuts, as well as automatic spending cuts agreed to as part of the debt ceiling debate last summer. Given the upcoming elections in the U.S., as well as the lagged nature of monetary policy actions, the Federal Reserve is likely to react to any decline in measures of growth. As a result, there is a possibility of further policy easing via either an extension of Operation Twist or a new asset purchase program altogether. However, continued improvements in the labor market could make further policy easing less likely.

This information is an excerpt from an economic report dated March 2012 provided to TexSTAR by JP Morgan Asset Management, Inc., the investment manager of the TexSTAR pool.

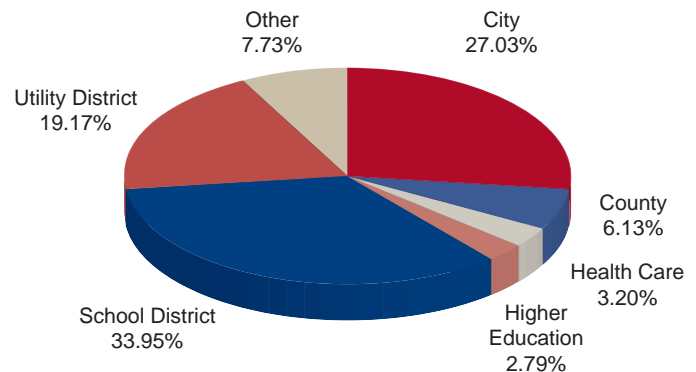
**For more information about TexSTAR, please visit our web site at [www.texstar.org](http://www.texstar.org).**

# Information at a Glance

## Portfolio by Type of Investment As of March 31, 2012



## Portfolio by Maturity As of March 31, 2012



## Distribution of Participants by Type As of March 31, 2012

# Historical Program Information

Month	Average Rate	Book Value	Market Value	Net Asset Value	WAM (1)*	WAM (2)*	Number of Participants
Mar 12	0.1148%	\$5,668,145,582.64	\$5,668,844,552.57	1.000123	48	71	751
Feb 12	0.0986%	6,014,562,468.35	6,015,309,681.45	1.000124	48	70	751
Jan 12	0.0902%	6,122,141,791.23	6,122,989,120.67	1.000138	46	73	750
Dec 11	0.0815%	5,164,291,074.36	5,164,844,831.26	1.000107	48	79	749
Nov 11	0.0973%	4,964,174,535.92	4,964,899,185.74	1.000145	48	80	747
Oct 11	0.0807%	5,191,742,744.46	5,192,081,793.52	1.000065	47	74	745
Sep 11	0.0906%	5,218,150,511.94	5,218,680,416.17	1.000100	46	76	741
Aug 11	0.0940%	4,773,149,074.88	4,773,628,030.81	1.000100	45	69	735
Jul 11	0.0746%	4,990,872,181.48	4,991,025,373.13	1.000030	38	55	735
Jun 11	0.0889%	5,280,726,280.87	5,281,501,501.41	1.000146	50	69	733
May 11	0.0863%	5,566,580,016.75	5,567,478,247.07	1.000161	46	66	732
Apr 11	0.1108%	5,661,130,480.00	5,662,108,871.87	1.000172	50	72	731

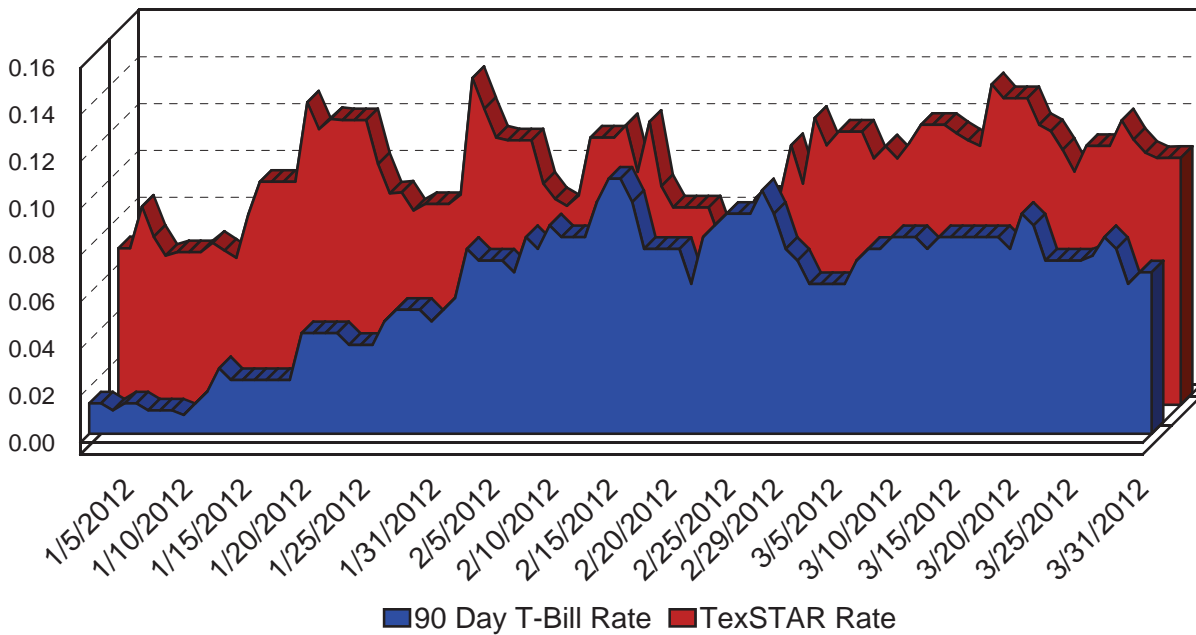
# Portfolio Asset Summary as of March 31, 2012

	Book Value	Market Value
Uninvested Balance	\$ 47,156.48	\$ 47,156.48
Accrual of Interest Income	369,137.71	369,137.71
Interest and Management Fees Payable	(933,769.62)	(933,769.62)
Payable for Investment Purchased	0.00	0.00
Repurchase Agreement	2,547,151,000.00	2,547,151,000.00
Government Securities	3,121,512,058.07	3,122,211,028.00
<b>Total</b>	<b>\$ 5,668,145,582.64</b>	<b>\$ 5,668,844,552.57</b>

Market value of collateral supporting the Repurchase Agreements is at least 102% of the Book Value. The portfolio is managed by J.P. Morgan Chase & Co. and the assets are safekept in a separate custodial account at the Federal Reserve Bank in the name of TexSTAR. The only source of payment to the Participants are the assets of TexSTAR. There is no secondary source of payment for the pool such as insurance or guarantee. Should you require a copy of the portfolio, please contact TexSTAR Participant Services.



# TexSTAR versus 90-Day Treasury Bill



This material is for information purposes only. This information does not represent an offer to buy or sell a security. The above rate information is obtained from sources that are believed to be reliable; however, its accuracy or completeness March be subject to change. The TexSTAR management fee may be waived in full or in part at the discretion of the TexSTAR co-administrators and the TexSTAR rate for the period shown reflects waiver of fees. This table represents investment performance/return to the customer, net of fees, and is not an indication of future performance. An investment in the security is not insured or guaranteed by the Federal Deposit Insurance Corporation or any other government agency. Although the issuer seeks to preserve the value of an investment at \$1.00 per share, it is possible to lose money by investing in the security. Information about these and other program details are in the fund's Information Statement which should be read carefully before investing. The yield on the 90-Day Treasury Bill ("T-Bill Yield") is shown for comparative purposes only. When comparing the investment returns of the TexSTAR pool to the T-Bill Yield, you should know that the TexSTAR pool consist of allocations of specific diversified securities as detailed in the respective Information Statements. The T-Bill Yield is taken from Bloomberg Finance L.P. and represents the daily closing yield on the then current 90-day T-Bill.

## Daily Summary for March 2012

Date	Mny Mkt Fund Equiv. [SEC Std.]	Daily Allocation Factor	TexSTAR Invested Balance	Market Value Per Share	WAM Days (1)*	WAM Days (2)*
3/1/2012	0.1108%	0.000003036	\$5,803,993,001.33	1.000131	49	72
3/2/2012	0.1167%	0.000003196	\$5,775,696,878.10	1.000127	48	71
3/3/2012	0.1167%	0.000003196	\$5,775,696,878.10	1.000127	48	71
3/4/2012	0.1167%	0.000003196	\$5,775,696,878.10	1.000127	48	71
3/5/2012	0.1053%	0.000002884	\$5,777,140,027.21	1.000108	47	71
3/6/2012	0.1104%	0.000003026	\$5,770,792,827.05	1.000095	48	71
3/7/2012	0.1052%	0.000002881	\$5,758,282,258.50	1.000097	48	71
3/8/2012	0.1118%	0.000003064	\$5,730,318,446.55	1.000094	47	71
3/9/2012	0.1196%	0.000003277	\$5,768,135,234.99	1.000094	47	71
3/10/2012	0.1196%	0.000003277	\$5,768,135,234.99	1.000094	47	71
3/11/2012	0.1196%	0.000003277	\$5,768,135,234.99	1.000094	47	71
3/12/2012	0.1160%	0.000003178	\$5,755,186,233.06	1.000105	49	73
3/13/2012	0.1129%	0.000003092	\$5,734,948,481.23	1.000103	50	74
3/14/2012	0.1106%	0.000003029	\$5,708,943,715.84	1.000090	50	73
3/15/2012	0.1369%	0.000003751	\$6,025,000,188.52	1.000084	49	71
3/16/2012	0.1310%	0.000003589	\$6,007,681,468.00	1.000090	48	70
3/17/2012	0.1310%	0.000003589	\$6,007,681,468.00	1.000090	48	70
3/18/2012	0.1310%	0.000003589	\$6,007,681,468.00	1.000090	48	70
3/19/2012	0.1196%	0.000003278	\$5,997,914,006.91	1.000099	48	70
3/20/2012	0.1169%	0.000003204	\$5,977,381,817.35	1.000094	48	71
3/21/2012	0.1090%	0.000002986	\$6,014,773,501.30	1.000087	48	70
3/22/2012	0.0996%	0.000002729	\$5,957,409,997.56	1.000093	48	70
3/23/2012	0.1106%	0.000003030	\$5,917,331,086.12	1.000093	47	69
3/24/2012	0.1106%	0.000003030	\$5,917,331,086.12	1.000093	47	69
3/25/2012	0.1106%	0.000003030	\$5,917,331,086.12	1.000093	47	69
3/26/2012	0.1215%	0.000003330	\$5,919,269,084.77	1.000091	46	68
3/27/2012	0.1133%	0.000003105	\$5,928,235,768.96	1.000100	49	70
3/28/2012	0.1077%	0.000002950	\$5,853,126,352.14	1.000111	51	73
3/29/2012	0.1054%	0.000002887	\$5,790,078,060.10	1.000117	50	73
3/30/2012	0.1055%	0.000002891	\$5,668,145,582.64	1.000123	50	72
3/31/2012	0.1055%	0.000002891	\$5,668,145,582.64	1.000123	50	72
Average	0.1148%	0.000003144	\$5,846,632,868.88		48	71

TexSTAR Participant Services  
First Southwest Asset Management, Inc.  
325 North St. Paul Street, Suite 800  
Dallas, Texas 75201



## **TexSTAR Board Members**

<i>William Chapman</i>	<i>Central Texas Regional Mobility Authority</i>	<i>Governing Board President</i>
<i>Nell Lange</i>	<i>City of Frisco</i>	<i>Governing Board Vice President</i>
<i>Melinda Garrett</i>	<i>Houston ISD</i>	<i>Governing Board Treasurer</i>
<i>Michael Bartolotta</i>	<i>First Southwest Company</i>	<i>Governing Board Secretary</i>
<i>Will Williams</i>	<i>JP Morgan Chase</i>	<i>Governing Board Asst. Sec./Treas.</i>
<i>Hardy Browder</i>	<i>City of Cedar Hill</i>	<i>Advisory Board</i>
<i>Oscar Cardenas</i>	<i>Northside ISD</i>	<i>Advisory Board</i>
<i>Stephen Fortenberry</i>	<i>McKinney ISD</i>	<i>Advisory Board</i>
<i>Monte Mercer</i>	<i>North Central TX Council of Government</i>	<i>Advisory Board</i>
<i>Becky Brooks</i>	<i>Government Resource Associates, LLC</i>	<i>Advisory Board</i>
<i>Len Santow</i>	<i>Griggs &amp; Santow</i>	<i>Advisory Board</i>

**For more information contact TexSTAR Participant Services ★ 1-800-TEX-STAR ★ [www.texstar.org](http://www.texstar.org)**



**J.P.Morgan**  
Asset Management